

SOIL LOGS

SOIL LOG#1 - APRIL 7, 2020

SOIL LOG#2 - APRIL 7, 2020

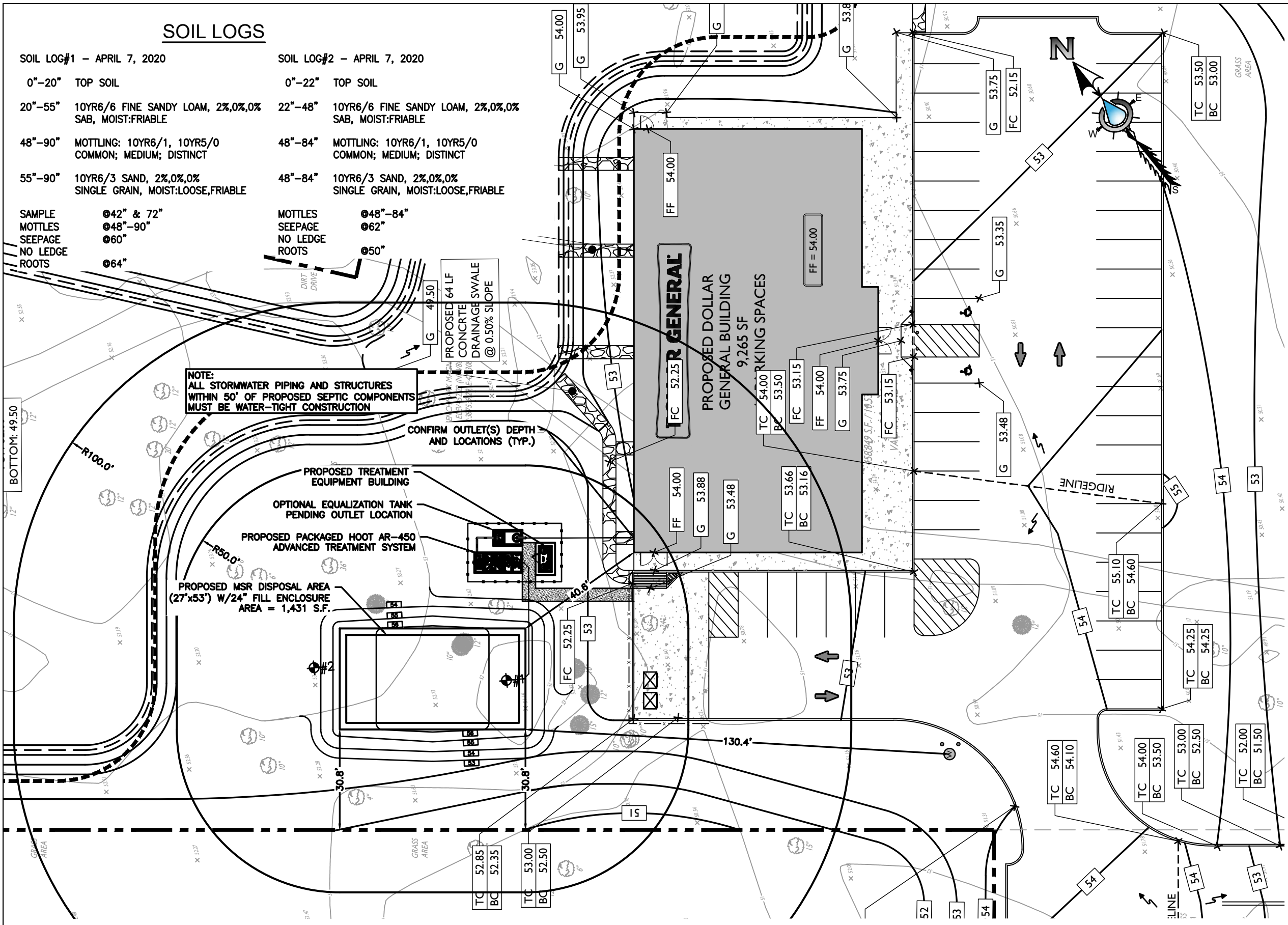
- 0"-20" TOP SOIL
- 20"-55" 10YR6/6 FINE SANDY LOAM, 2%,0%,0% SAB, MOIST:FRIABLE
- 48"-90" MOTTLING: 10YR6/1, 10YR5/0 COMMON; MEDIUM; DISTINCT
- 55"-90" 10YR6/3 SAND, 2%,0%,0% SINGLE GRAIN, MOIST:LOOSE,FRIABLE

- 0"-22" TOP SOIL
- 22"-48" 10YR6/6 FINE SANDY LOAM, 2%,0%,0% SAB, MOIST:FRIABLE
- 48"-84" MOTTLING: 10YR6/1, 10YR5/0 COMMON; MEDIUM; DISTINCT
- 48"-84" 10YR6/3 SAND, 2%,0%,0% SINGLE GRAIN, MOIST:LOOSE,FRIABLE

- SAMPLE \odot 42" & 72"
- MOTTLES \odot 48"-90"
- SEEPAGE \odot 60"
- NO LEDGE \odot 64"
- ROOTS \odot 64"

- MOTTLES \odot 48"-84"
- SEEPAGE \odot 62"
- NO LEDGE \odot 50"
- ROOTS \odot 50"

NOTE:
ALL STORMWATER PIPING AND STRUCTURES WITHIN 50' OF PROPOSED SEPTIC COMPONENTS MUST BE WATER-TIGHT CONSTRUCTION



DESIGN CRITERIA

VOLUME OF SANITARY SEWAGE, Q (DESIGN FLOW)
PROPOSED DESIGN FLOW
 PER NJAC 7:9A TABLE 7.4(a)
 - COMMERCIAL USE (RETAIL):
 $9,265 \text{ S.F.} \times 0.125 \text{ GPD/S.F.} = 1,158.2 \text{ GPD}$

PROPOSED SYSTEM TANKS
 - TREATMENT SYSTEM TO BE DETERMINED

TRADITIONAL GRAVITY DISTRIBUTION BED SIZING
 - GRAVITY DISTRIBUTION: 1.61 S.F./GPD
 $- 1,158.2 \text{ GPD} \times 1.61 \text{ S.F./GPD} = 1,864.7 \text{ S.F.}$

ADVANCED TREATMENT DISTRIBUTION BED SIZING
 - GRAVITY DISTRIBUTION: 1.233 S.F./GPD
 $- 1,158.2 \text{ GPD} \times 1.233 \text{ S.F./GPD} = 1,428.1 \text{ S.F.}$

PROPOSED DISPOSAL BED
 $- (1) 27.0' \times 53.0'$
 $\text{W/24" FILL ENCLOSURE} = 1,431.0 \text{ S.F.}$

TREATMENT DESIGN PARAMETERS

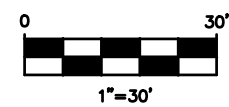
PARAMETER	INFLUENT	EFFLUENT
FLOW	40-350 GPD	-
BOD	200 MG/L	$\leq 30.00 \text{ MG/L}$ OR 0.09 LBS/DAY
TSS	200 MG/L	$\leq 30.00 \text{ MG/L}$ OR 0.09 LBS/DAY
TN	170 MG/L	$\leq 9.01 \text{ MG/L}$ OR 0.03 LBS/DAY

IT IS ASSUMED THE PROPOSED HOOT SYSTEM WILL REDUCE TN EFFLUENT CONCENTRATIONS BY 94.7%

REFERENCES

- PROPOSED DOLLAR GENERAL, PREPARED BY STONEFIELD ENGINEERING & DESIGN, FEBRUARY 20, 2020

GRAPHIC SCALE



HOUSER Engineering, LLC
 1141 Greenwood Lake Tpke. Ringwood, NJ 07456
 Tel: 973-728-2945 / Fax: 973-506-1524
 www.housereng.com
 NJ CERT. OF AUTH. NO.: 24GA28163600

TITLE: **TEST HOLE LOCATION & CONCEPT LAYOUT PLAN**
 APPLICANT: **DOLLAR GENERAL**

PROJECT: **PROPOSED DOLLAR GENERAL 1823 US 206 SOUTH SOUTHAMPTON TOWNSHIP BLOCK 2203, LOT 14**

DRAWN BY: **BEB**
 SCALE: **SEE SCALE**
 DATE: **07/27/2020**
 PROJECT NO.: **3049.20**
 SHEET NO.: **1 OF 1**